



Index

PROPERTY MAP
NEWMARKET
NEW HAMPSHIRE



0 750 1,500 2,250 3,000 3,750 4,500 Feet

☒ Tax Parcel
— Utility ROWs

MAP SHEET

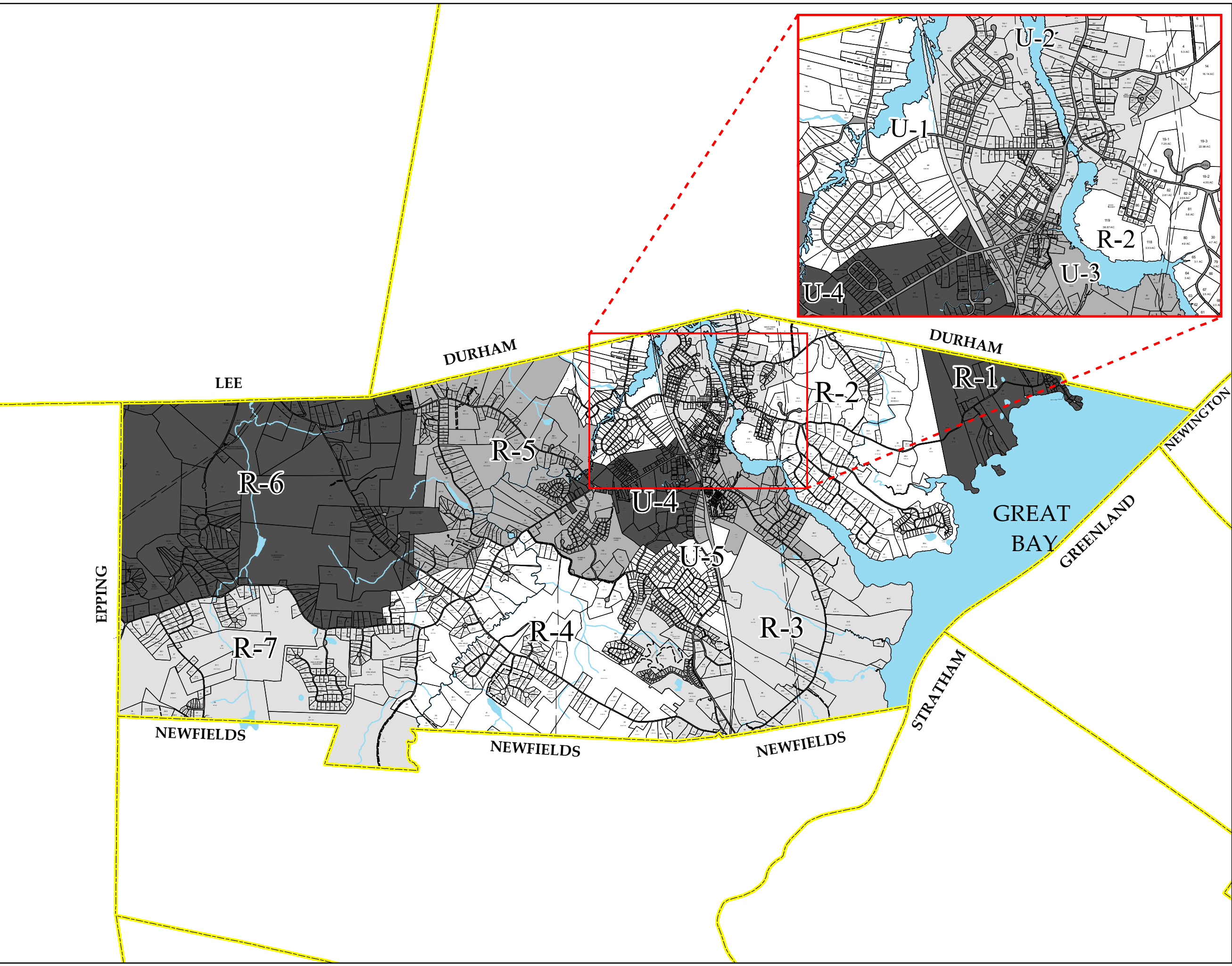
- ☒ R1
- ☒ R2
- ☒ R3
- ☒ R4
- ☒ R5
- ☒ R6
- ☒ R7
- ☒ U1
- ☒ U2
- ☒ U3
- ☒ U4
- ☒ U5
- ☒ ROAD

This map was produced by the Strafford Regional Planning Commission. Original tax maps were recomputed onto 1:4800 and 1:2400 NH GRANIT GIS Digital Orthophoto Quarter Quadrangles (DOQQ) on mylar and digitized to form a digital composite map in October, 2001. Parcel shapes were distorted as part of the compilation process; therefore, map-measured distances and areas may be different than reported distances and areas.

Original source maps:
John E. O'Donnell & Associates; Auburn, Maine; Revised April 1, 1996.
Updated and Reprinted by Doucet Survey, Inc.; Newmarket, NH; August 10, 1998.

UPDATES:
June 2007 with data through 2006 (DA)
June 2009 with data through 2008 (DC)
April 2015 with data through March 2015 (CS)
August 2016 with data through March 2016 (RM)
July 2017 with data through April 2017 (RM)
July 2019 with data through April 2019 (GIS Planner)

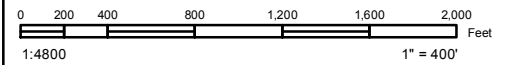
**THIS MAP IS FOR ASSESSMENT PURPOSES ONLY.
IT IS NOT INTENDED FOR LEGAL DESCRIPTION OR CONVEYANCE.**





R-1

PROPERTY MAP NEWMARKET NEW HAMPSHIRE



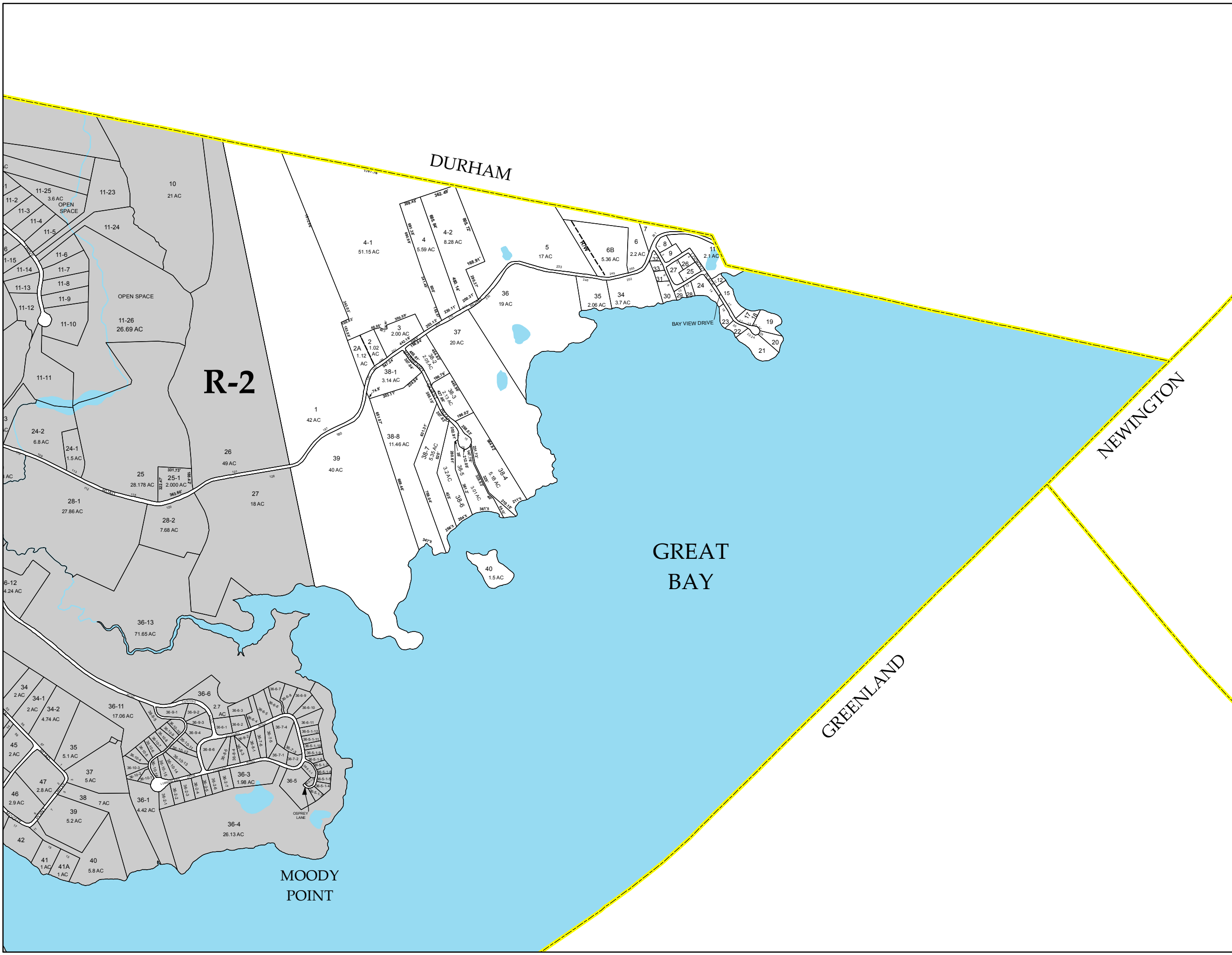
- Utility ROWs
- Easements, Access Roads, Gravel Roads
- R-1 Current Map Sheet
- R-2 Adjacent Map Sheet
- Cemetery

This map was produced by the Strafford Regional Planning Commission. Original tax maps were recompiled onto 1:4800 and 1:2400 NH GRANIT GIS Digital Orthophoto Quarter Quadrangles (DOQQ) on mylar and digitized to form a digital composite map in October, 2001. Parcel shapes were distorted as part of the compilation process; therefore, map-measured distances and areas may be different than reported distances and areas.

Original source maps:
John E. O'Donnell & Associates; Auburn, Maine; Revised April 1, 1996.
Updated and Reprinted by Doucet Survey, Inc.; Newmarket, NH; August 10, 1998.

UPDATES:
June 2007 with data through 2006 (DA)
June 2009 with data through 2008 (DC)
April 2015 with data through March 2015 (CS)
August 2016 with data through March 2016 (RM)
July 2017 with data through April 2017 (RM)
July 2019 with data through April 2019 (GIS Planner)

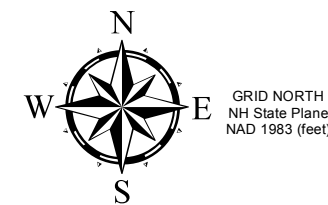
**THIS MAP IS FOR ASSESSMENT PURPOSES ONLY.
IT IS NOT INTENDED FOR LEGAL DESCRIPTION OR CONVEYANCE.**





R-2

PROPERTY MAP NEWMARKET NEW HAMPSHIRE



GRID NORTH
NH State Plane
NAD 1983 (feet)



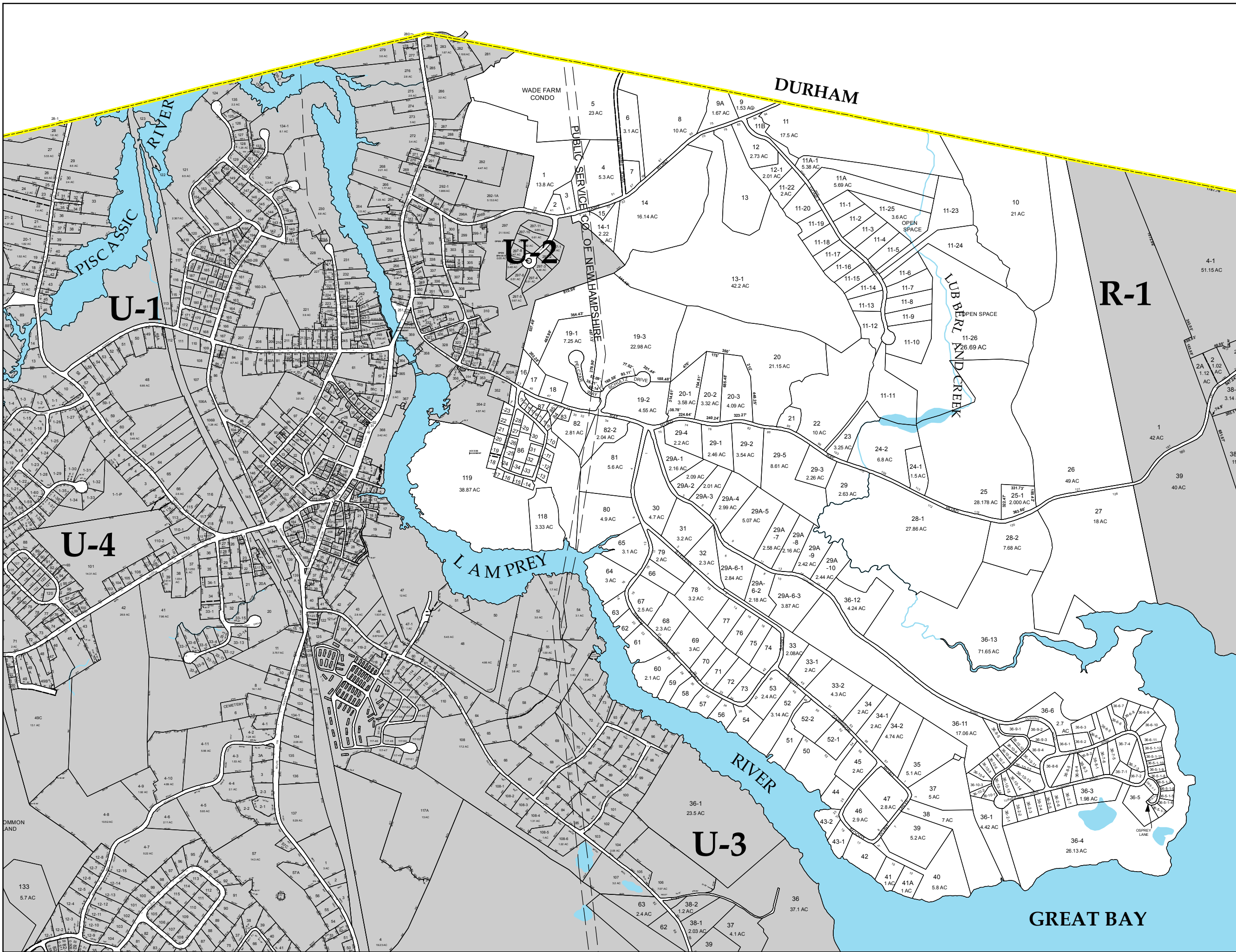
- Utility ROWs
- Easements, Access Roads, Gravel Roads
- Current Map Sheet
- Adjacent Map Sheet
- Cemetery

This map was produced by the Strafford Regional Planning Commission. Original tax maps were compiled onto 1:4800 and 1:2400 NH GRANIT GIS Digital Orthophoto Quarter Quadrangles (DOQQ) on mylar and digitized to form a digital composite map in October, 2001. Parcel shapes were distorted as part of the compilation process; therefore, map-measured distances and areas may be different than reported distances and areas.

Original source maps:
John E. O'Donnell & Associates; Auburn, Maine; Revised April 1, 1996.
Updated and Reprinted by Doucet Survey, Inc.; Newmarket, NH; August 10, 1998.

UPDATES:
June 2007 with data through 2006 (DA)
June 2009 with data through 2008 (DC)
April 2015 with data through March 2015 (CS)
August 2016 with data through March 2016 (RM)
July 2017 with data through April 2017 (RM)
July 2019 with data through April 2019 (GIS Planner)

**THIS MAP IS FOR ASSESSMENT PURPOSES ONLY.
IT IS NOT INTENDED FOR LEGAL DESCRIPTION OR CONVEYANCE.**



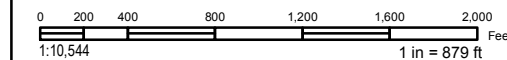


R-3

PROPERTY MAP NEWMARKET NEW HAMPSHIRE



GRID NORTH
NH State Plane
NAD 1983 (feet)



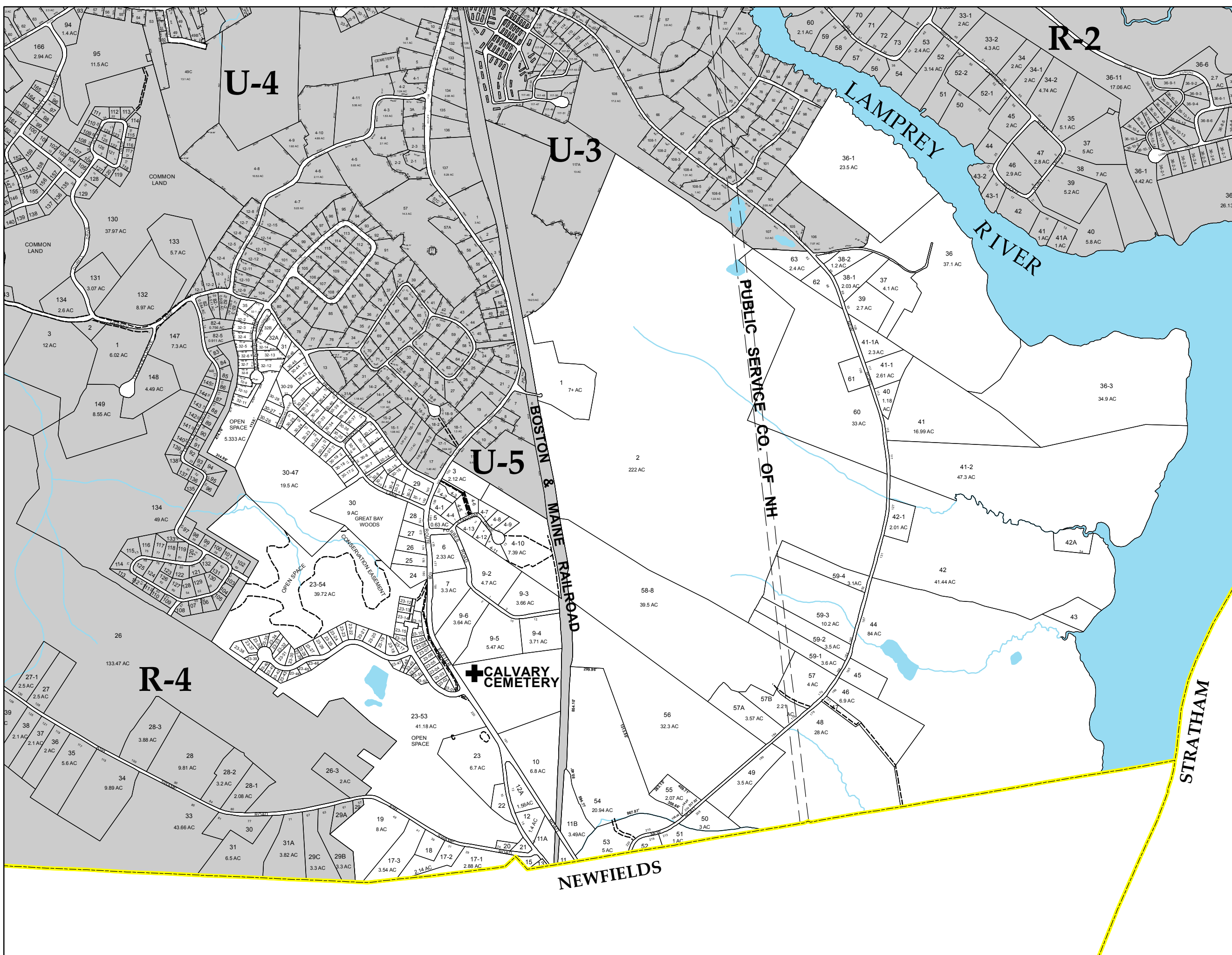
- Utility ROWs
- Easements, Access Roads, Gravel Roads
- Current Map Sheet
- Adjacent Map Sheet
- Cemetery

This map was produced by the Strafford Regional Planning Commission. Original tax maps were recompiled onto 1:4800 and 1:2400 NH GRANIT GIS Digital Orthophoto Quarter Quadrangles (DQQQ) on mylar and digitized to form a digital composite map in October, 2001. Parcel shapes were distorted as part of the compilation process; therefore, map-measured distances and areas may be different than reported distances and areas.

Original source maps:
John E. O'Donnell & Associates; Auburn, Maine; Revised April 1, 1996.
Updated and Reprinted by Doucet Survey, Inc.; Newmarket, NH; August 10, 1998.

UPDATES:
June 2007 with data through 2006 (DA)
June 2009 with data through 2008 (DC)
April 2015 with data through March 2015 (CS)
August 2016 with data through March 2016 (RM)
July 2017 with data through April 2017 (RM)
July 2019 with data through April 2019 (GIS Planner)

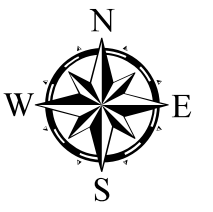
**THIS MAP IS FOR ASSESSMENT PURPOSES ONLY.
IT IS NOT INTENDED FOR LEGAL DESCRIPTION OR CONVEYANCE.**





R-4

PROPERTY MAP NEWMARKET NEW HAMPSHIRE



GRID NORTH
NH State Plane
NAD 1983 (feet)



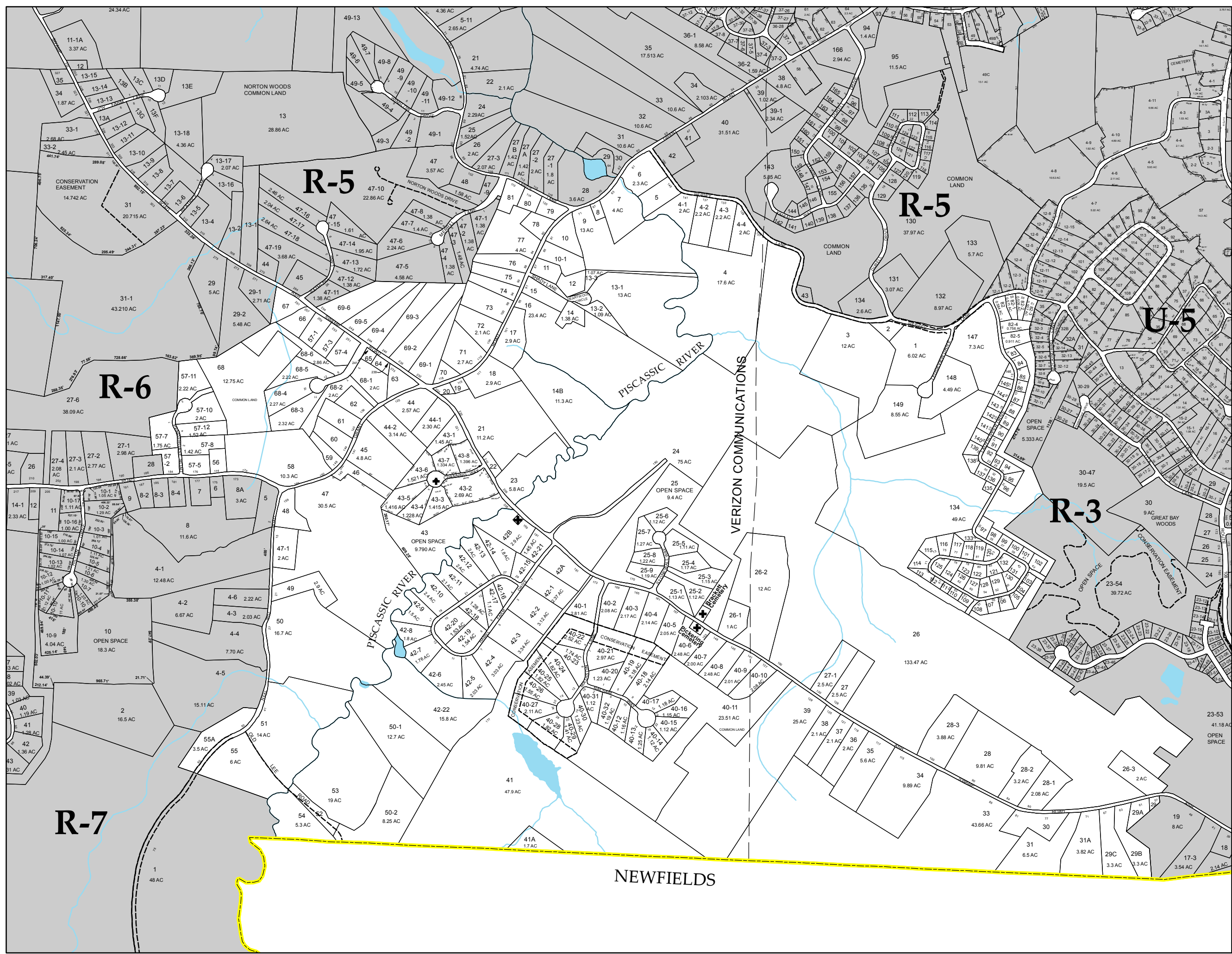
- Utility ROWs
- Easements, Access Roads, Gravel Roads
- R-4 Current Map Sheet
- R-5 Adjacent Map Sheet
- Cemetery

This map was produced by the Strafford Regional Planning Commission. Original tax maps were recompiled onto 1:4800 and 1:2400 NH GRANIT GIS Digital Orthophoto Quarter Quadrangles (DOQQ) on mylar and digitized to form a digital composite map in October, 2001. Parcel shapes were distorted as part of the compilation process; therefore, map-measured distances and areas may be different than reported distances and areas.

Original source maps:
John E. O'Donnell & Associates; Auburn, Maine; Revised April 1, 1996.
Updated and Reprinted by Doucet Survey, Inc.; Newmarket, NH; August 10, 1998.

UPDATES:
June 2007 with data through 2006 (DA)
June 2009 with data through 2008 (DC)
April 2015 with data through March 2015 (CS)
August 2016 with data through March 2016 (RM)
July 2017 with data through April 2017 (RM)
July 2019 with data through April 2019 (GIS Planner)

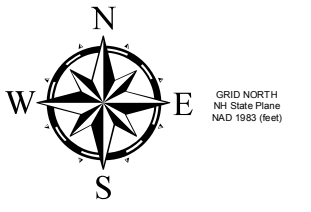
**THIS MAP IS FOR ASSESSMENT PURPOSES ONLY.
IT IS NOT INTENDED FOR LEGAL DESCRIPTION OR CONVEYANCE.**





R-5

PROPERTY MAP NEWMARKET NEW HAMPSHIRE



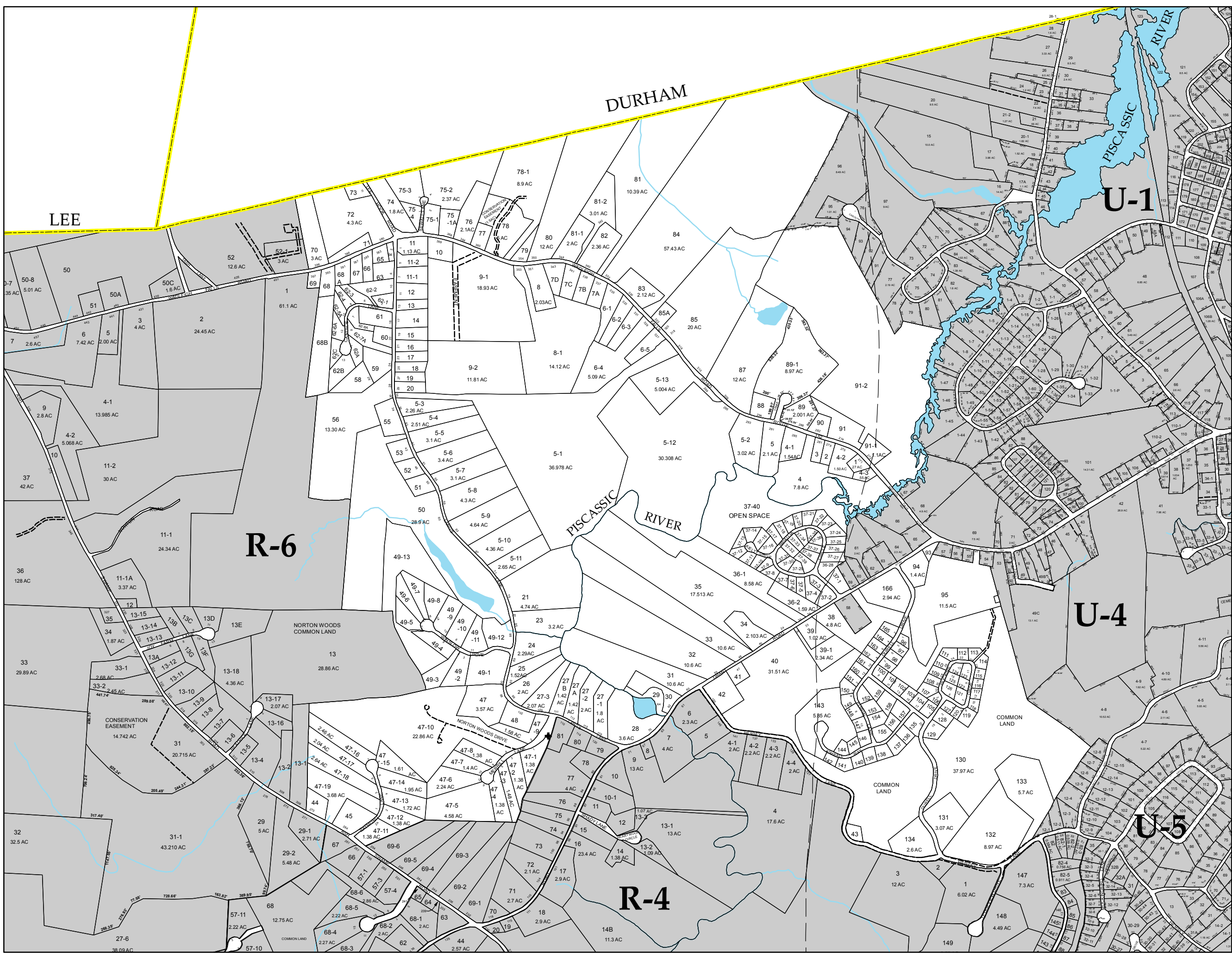
- Utility ROWs
- Easements, Access Roads, Gravel Roads
- R-5 Current Map Sheet
- R-6 Adjacent Map Sheet
- Cemetery

This map was produced by the Strafford Regional Planning Commission. Original tax maps were compiled onto 1:4800 and 1:2400 NH GRANIT GIS Digital Orthophoto Quarter Quadrangles (DOQQ) on mylar and digitized to form a digital composite map in October, 2001. Parcel shapes were distorted as part of the compilation process; therefore, map-measured distances and areas may be different than reported distances and areas.

Original source maps:
John E. O'Donnell & Associates; Auburn, Maine; Revised April 1, 1996.
Updated and Reprinted by Doucet Survey, Inc.; Newmarket, NH; August 10, 1998.

UPDATES:
June 2007 with data through 2006 (DA)
June 2009 with data through 2008 (DC)
April 2015 with data through March 2015 (CS)
August 2016 with data through March 2016 (RM)
July 2017 with data through April 2017 (RM)
July 2019 with data through April 2019 (GIS Planner)

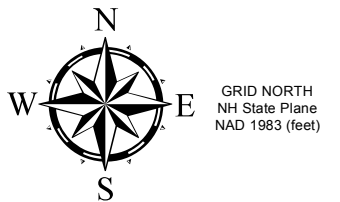
**THIS MAP IS FOR ASSESSMENT PURPOSES ONLY.
IT IS NOT INTENDED FOR LEGAL DESCRIPTION OR CONVEYANCE.**



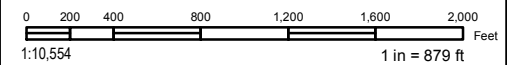


R-6

PROPERTY MAP NEWMARKET NEW HAMPSHIRE



GRID NORTH
NH State Plane
NAD 1983 (feet)



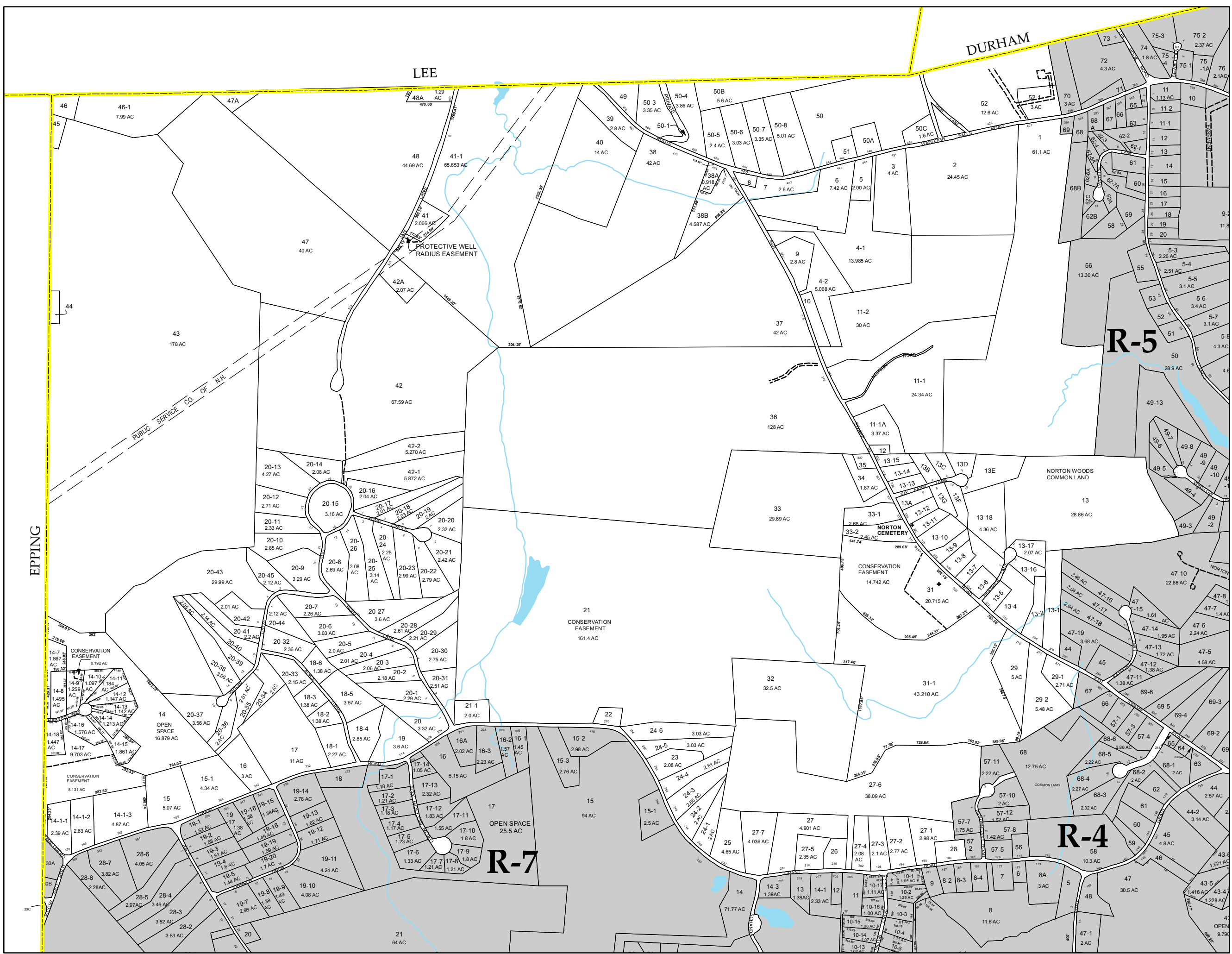
- Utility ROWs
- Easements, Access Roads, Gravel Roads
- Current Map Sheet
- Adjacent Map Sheet
- Cemetery

This map was produced by the Stafford Regional Planning Commission. Original tax maps were compiled onto 1:4800 and 1:2400 NH GRANIT GIS Digital Orthophoto Quarter Quadrangles (DOQQ) on mylar and digitized to form a digital composite map in October, 2001. Parcel shapes were distorted as part of the compilation process; therefore, map-measured distances and areas may be different than reported distances and areas.

Original source maps:
John E. O'Donnell & Associates; Auburn, Maine; Revised April 1, 1996.
Updated and Reprinted by Doucet Survey, Inc.; Newmarket, NH; August 10, 1998.

UPDATES:
June 2007 with data through 2006 (DA)
June 2009 with data through 2008 (DC)
April 2015 with data through March 2015 (CS)
August 2016 with data through March 2016 (RM)
July 2017 with data through April 2017 (RM)
July 2019 with data through April 2019 (GIS Planner)

**THIS MAP IS FOR ASSESSMENT PURPOSES ONLY.
IT IS NOT INTENDED FOR LEGAL DESCRIPTION OR CONVEYANCE.**





R-7

PROPERTY MAP NEWMARKET NEW HAMPSHIRE



GRID NORTH
NH State Plane
NAD 1983 (feet)

0 200 400 800 1,200 1,600 2,000 Feet
1:10,564 1 in = 880 ft

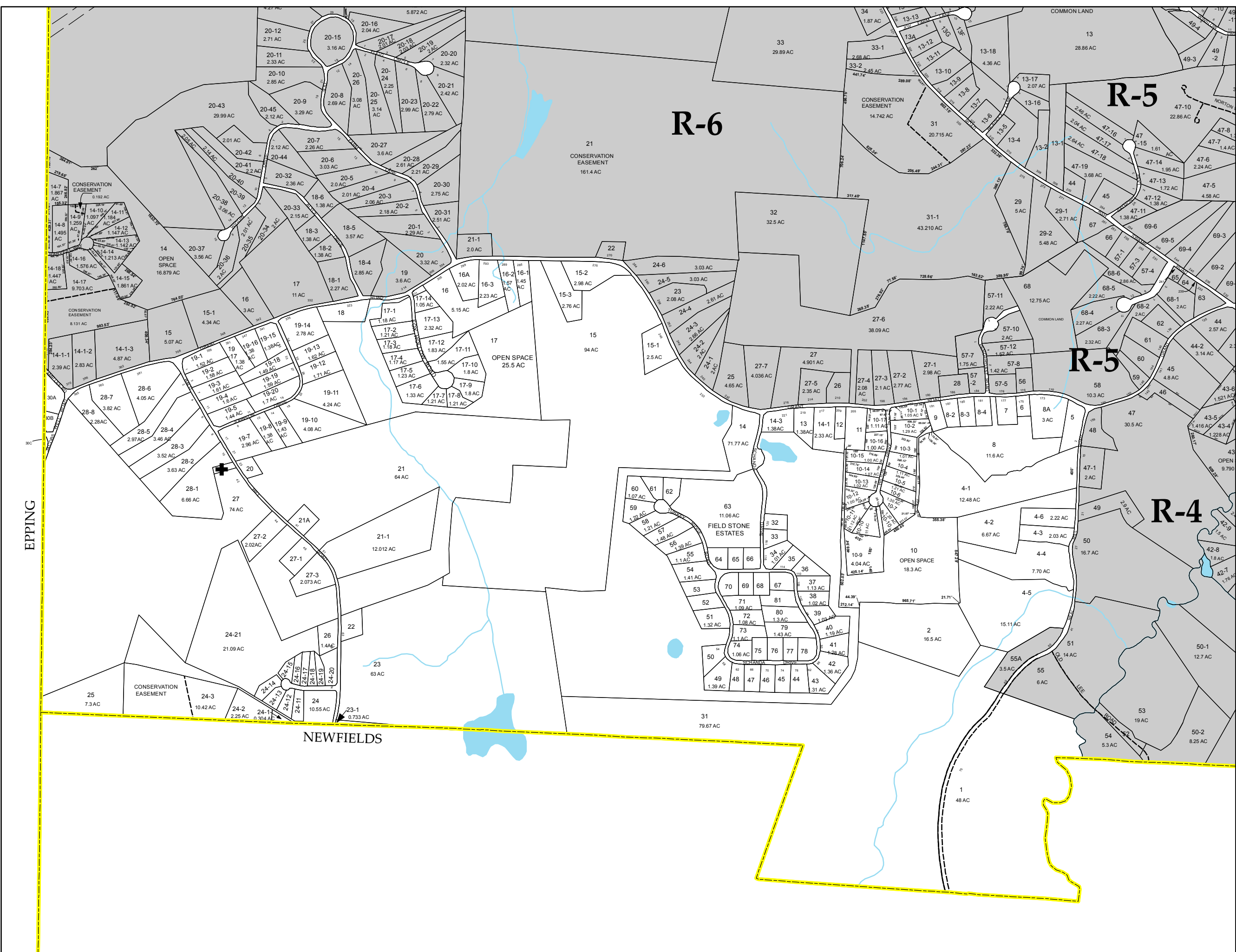
- Utility ROWs
- Easements, Access Roads, Gravel Roads
- Current Map Sheet
- Adjacent Map Sheet
- Cemetery

This map was produced by the Strafford Regional Planning Commission. Original tax maps were compiled onto 1:4800 and 1:2400 NH GRANIT GIS Digital Orthophoto Quarter Quadrangles (DOQQ) on mylar and digitized to form a digital composite map in October, 2001. Parcel shapes were distorted as part of the compilation process; therefore, map-measured distances and areas may be different than reported distances and areas.

Original source maps:
John E. O'Donnell & Associates; Auburn, Maine; Revised April 1, 1996.
Updated and Reprinted by Doucet Survey, Inc.; Newmarket, NH; August 10, 1998.

UPDATES:
June 2007 with data through 2006 (DA)
June 2009 with data through 2008 (DC)
April 2015 with data through March 2015 (CS)
August 2016 with data through March 2016 (RM)
July 2017 with data through April 2017 (RM)
July 2019 with data through April 2019 (GIS Planner)

**THIS MAP IS FOR ASSESSMENT PURPOSES ONLY.
IT IS NOT INTENDED FOR LEGAL DESCRIPTION OR CONVEYANCE.**



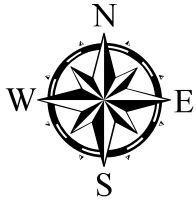
EPPING

NEWFIELDS

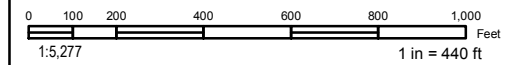


U-1

PROPERTY MAP NEWMARKET NEW HAMPSHIRE



GRID NORTH
NH State Plane
NAD 1983 (feet)



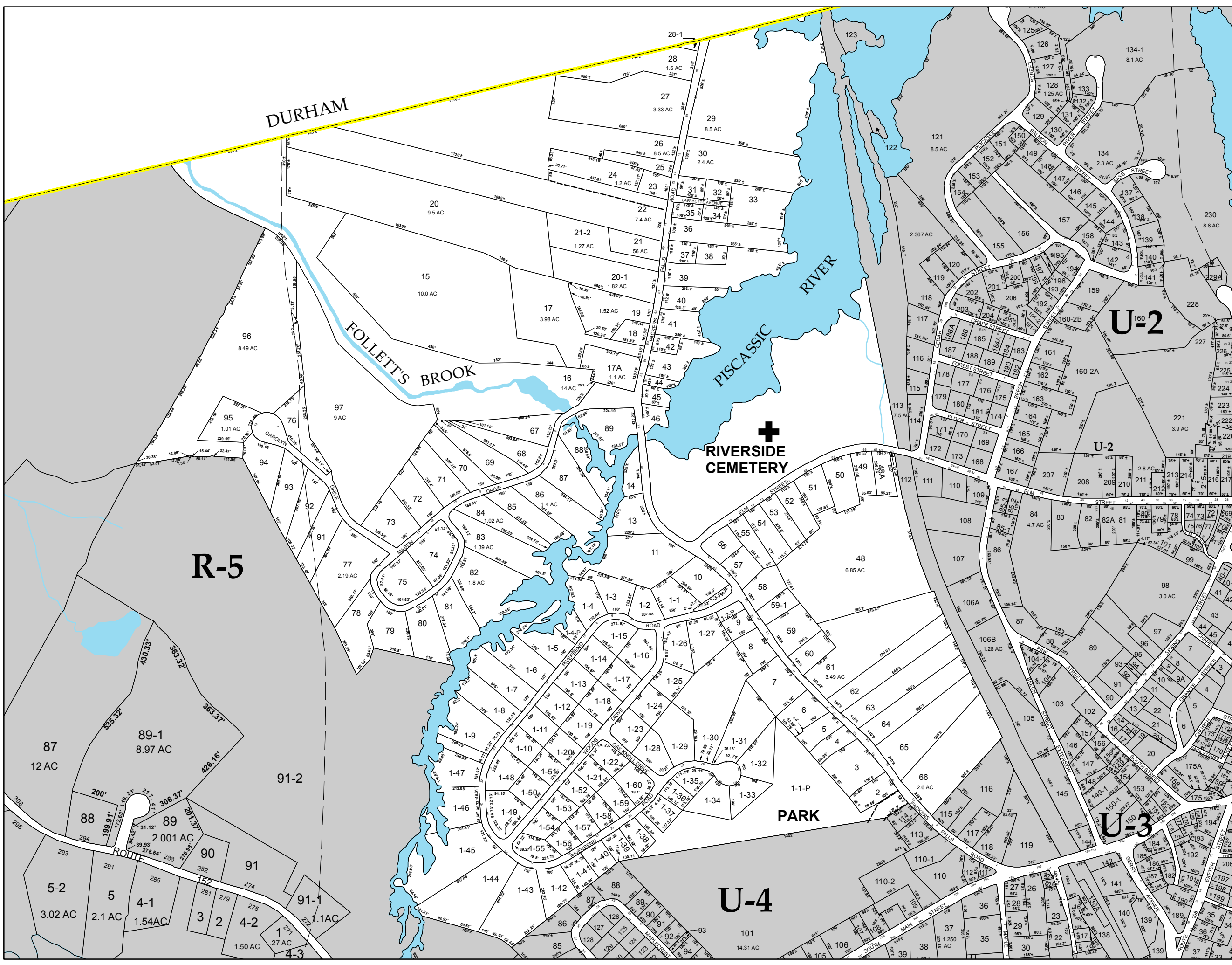
- Utility ROWs
- Easements, Access Roads, Gravel Roads
- U-1 Current Map Sheet
- U-2 Adjacent Map Sheet
- Cemetery

This map was produced by the Strafford Regional Planning Commission. Original tax maps were recompiled onto 1:4800 and 1:2400 NH GRANIT GIS Digital Orthophoto Quarter Quadrangles (DOQQ) on mylar and digitized to form a digital composite map in October, 2001. Parcel shapes were distorted as part of the compilation process; therefore, map-measured distances and areas may be different than reported distances and areas.

Original source maps:
John E. O'Donnell & Associates; Auburn, Maine; Revised April 1, 1996.
Updated and Reprinted by Doucet Survey, Inc.; Newmarket, NH; August 10, 1998.

UPDATES:
June 2007 with data through 2006 (DA)
June 2009 with data through 2008 (DC)
April 2015 with data through March 2015 (CS)
August 2016 with data through March 2016 (RM)
July 2017 with data through April 2017 (RM)
July 2019 with data through April 2019 (GIS Planner)

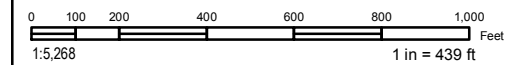
**THIS MAP IS FOR ASSESSMENT PURPOSES ONLY.
IT IS NOT INTENDED FOR LEGAL DESCRIPTION OR CONVEYANCE.**





U-2

PROPERTY MAP NEWMARKET NEW HAMPSHIRE



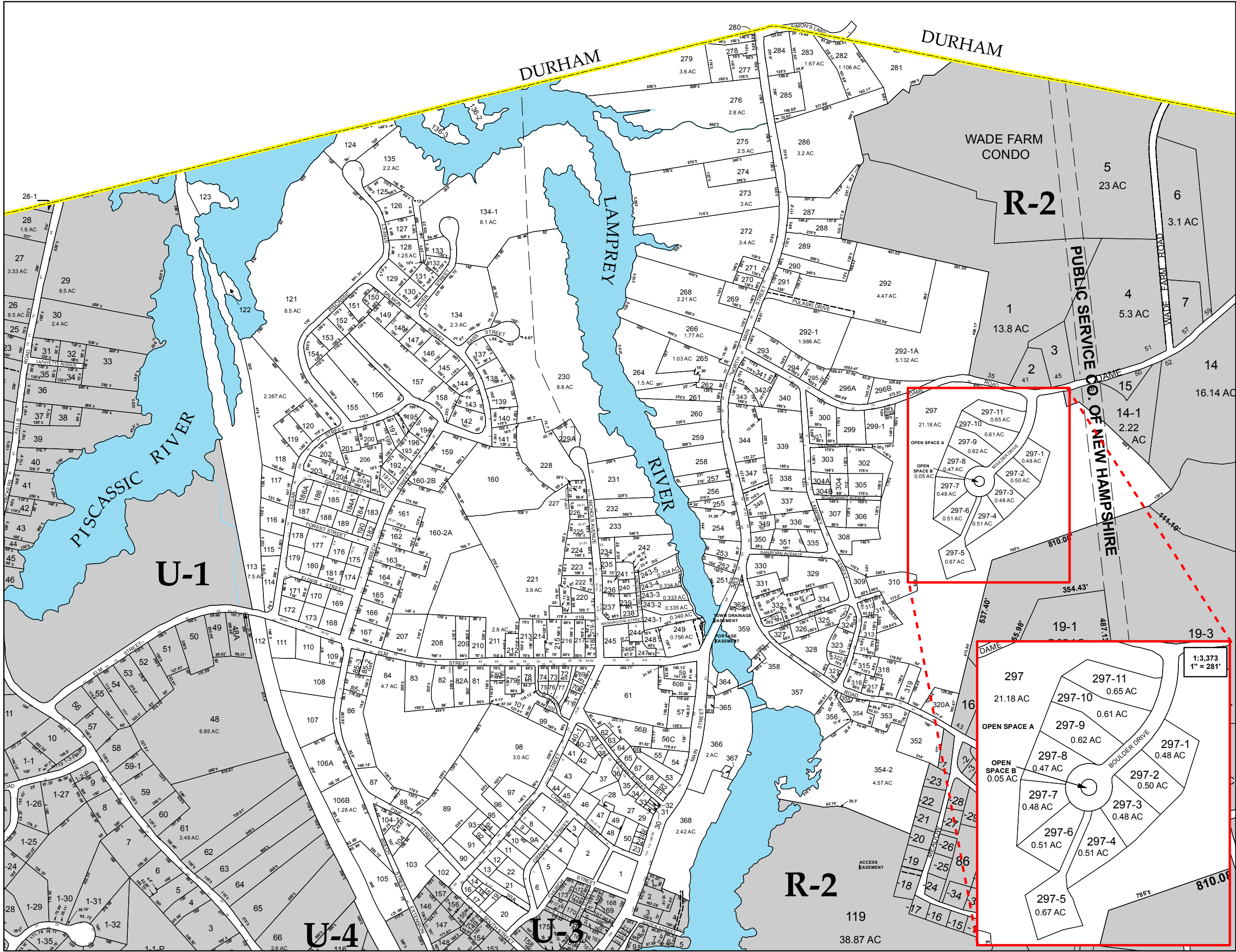
- Utility ROWs
- Easements, Access Roads, Gravel Roads
- U-2 Current Map Sheet
- U-3 Adjacent Map Sheet
- Cemetery

This map was produced by the Strafford Regional Planning Commission. Original tax maps were recomputed onto 1:4800 and 1:2400 NH GRANIT GIS Digital Orthophoto Quarter Quadrangles (DOQQ) on mylar and digitized to form a digital composite map in October, 2001. Parcel shapes were distorted as part of the compilation process; therefore, map-measured distances and areas may be different than reported distances and areas.

Original source maps:
John E. O'Donnell & Associates; Auburn, Maine; Revised April 1, 1996.
Updated and Reprinted by Doucet Survey, Inc.; Newmarket, NH; August 10, 1998.

UPDATES:
June 2007 with data through 2006 (DA)
June 2009 with data through 2008 (DC)
April 2015 with data through March 2015 (CS)
August 2016 with data through March 2016 (RM)
July 2017 with data through April 2017 (RM)
July 2019 with data through April 2019 (GIS Planner)

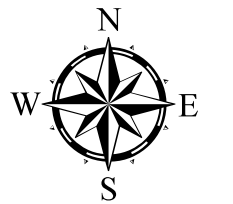
**THIS MAP IS FOR ASSESSMENT PURPOSES ONLY.
IT IS NOT INTENDED FOR LEGAL DESCRIPTION OR CONVEYANCE.**





U-4

PROPERTY MAP NEWMARKET NEW HAMPSHIRE



GRID NORTH
NH State Plane
NAD 1983

0 100 200 400 600 800 1000 Feet
1:5,281 1 in = 440 ft

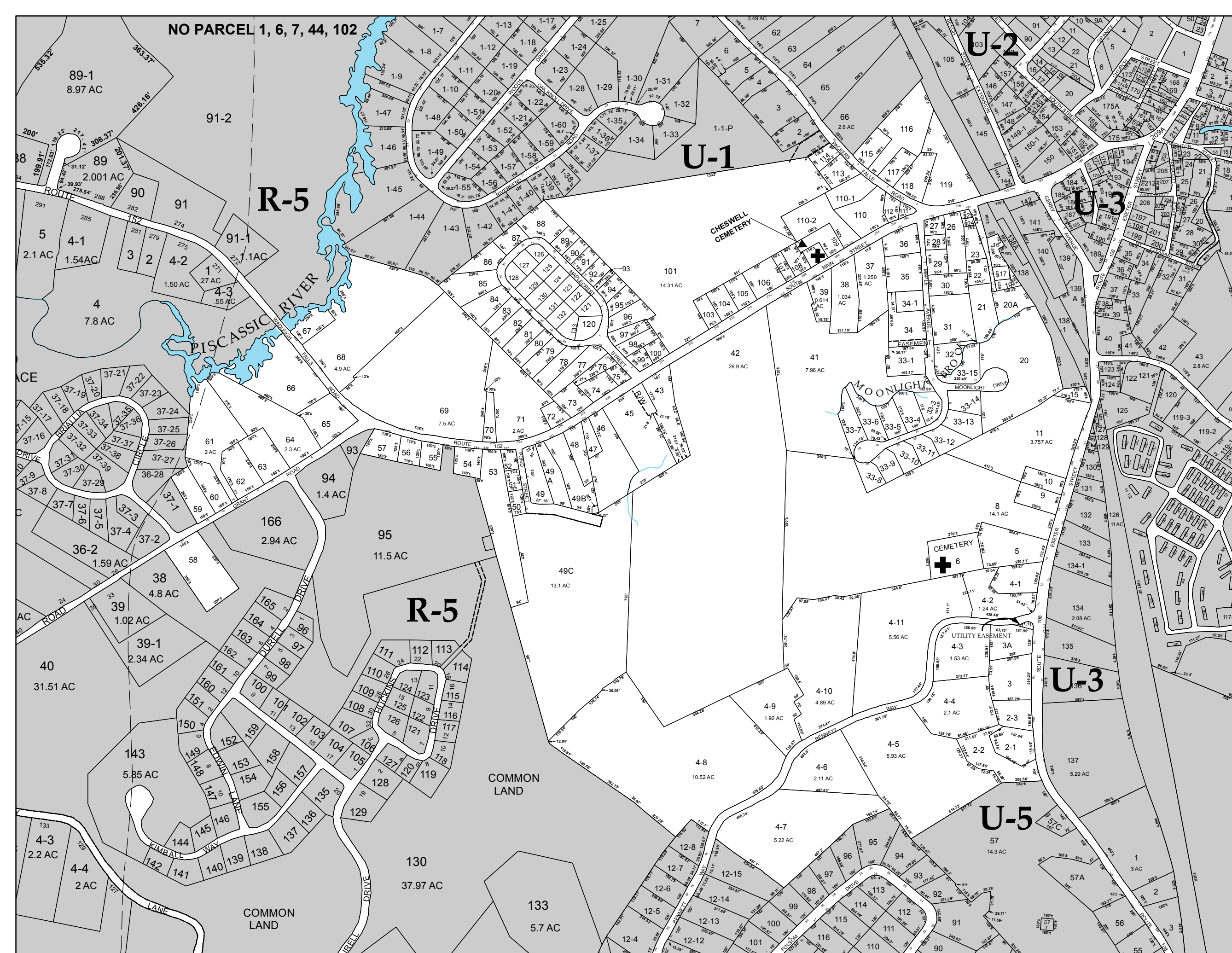
- Utility ROWs
- Easements, Access Roads, Gravel Roads
- U-4 Current Map Sheet
- U-5 Adjacent Map Sheet
- Cemetery

This map was produced by the Strafford Regional Planning Commission. Original tax maps were compiled onto 1:4800 and 1:2400 NH GRANIT GIS Digital Orthophoto Quarter Quadrangles (DOQQ) on mylar and digitized to form a digital composite map in October, 2001. Parcel shapes were distorted as part of the compilation process; therefore, map-measured distances and areas may be different than reported distances and areas.

Original source maps:
John E. O'Donnell & Associates; Auburn, Maine; Revised April 1, 1996.
Updated and Reprinted by Doucet Survey, Inc.; Newmarket, NH; August 10, 1998.

UPDATES:
June 2007 with data through 2006 (DA)
June 2009 with data through 2008 (DC)
April 2015 with data through March 2015 (CS)
August 2016 with data through March 2016 (RM)
July 2017 with data through April 2017 (RM)
July 2019 with data through April 2019 (GIS Planner)

**THIS MAP IS FOR ASSESSMENT PURPOSES ONLY.
IT IS NOT INTENDED FOR LEGAL DESCRIPTION OR CONVEYANCE.**



NO PARCEL 1, 6, 7, 44, 102

R-5

U-1

U-2

U-3

R-5

U-3

U-5

COMMON LAND

COMMON LAND

CHESWELL CEMETERY

MOONLIGHT CEMETERY

CEMETERY

UTILITY EASEMENT

COMMON LAND

COMMON LAND

89-1
8.97 AC

91-2

4
7.8 AC

166
2.94 AC

95
11.5 AC

49C
13.1 AC

40
31.51 AC

143
5.85 AC

130
37.97 AC

133
5.7 AC

4-8
10.52 AC

4-9
1.92 AC

4-10
4.89 AC

4-5
5.93 AC

4-4
2.1 AC

4-3
1.53 AC

4-2
1.24 AC

4-1
1.24 AC

4-7
5.22 AC

4-6
2.11 AC

4-5
5.93 AC

4-4
2.1 AC

4-3
1.53 AC

4-2
1.24 AC

4-1
1.24 AC

4-1
1.24 AC

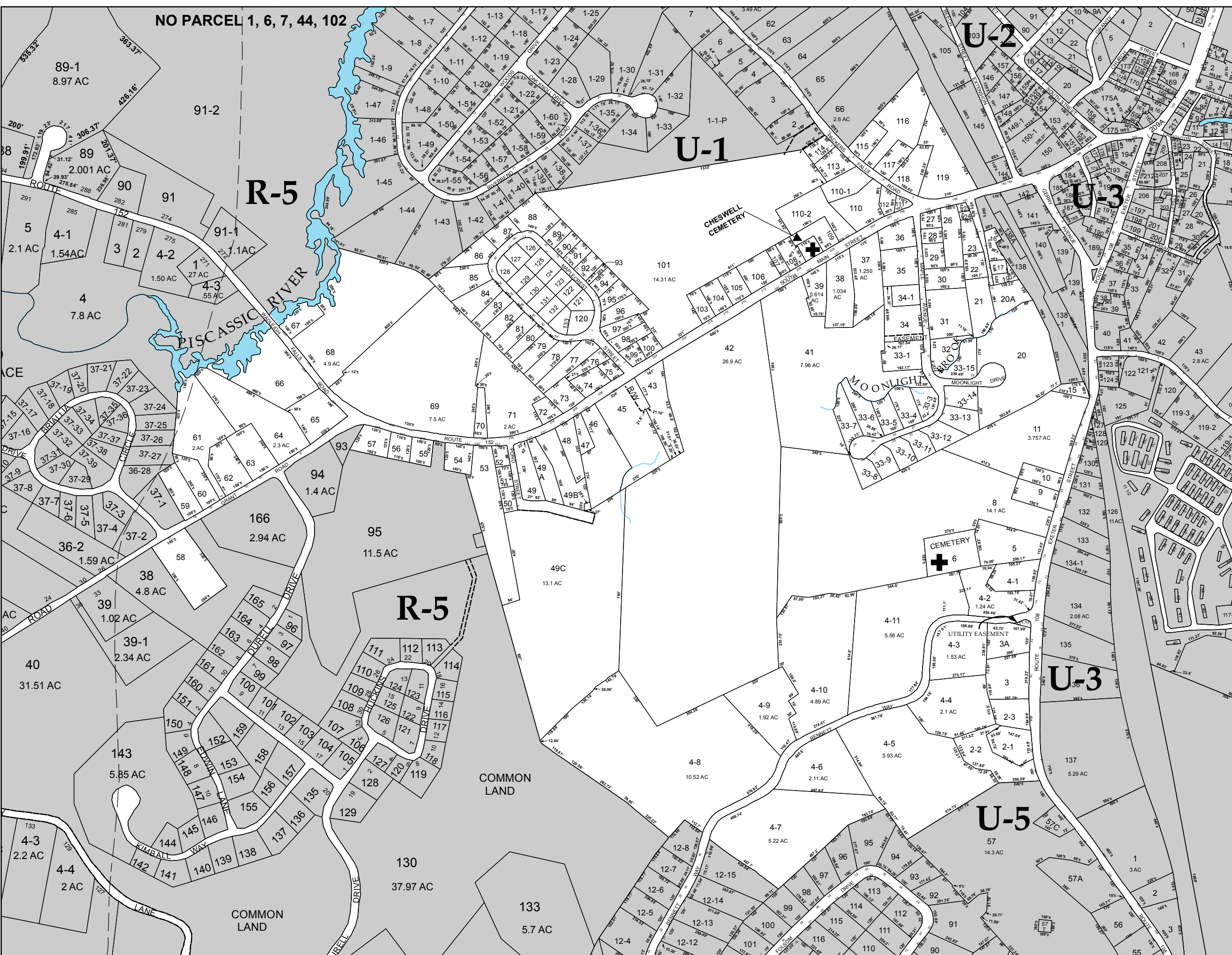
4-1
1.24 AC

4-1
1.24 AC

4-1
1.24 AC

4-1
1.24 AC

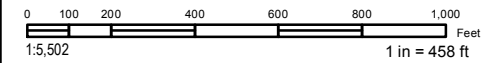
4-1
1.24 AC





U-5

PROPERTY MAP NEWMARKET NEW HAMPSHIRE



- Utility ROWs
- Easements, Access Roads, Gravel Roads
- U-5 Current Map Sheet
- U-4 Adjacent Map Sheet
- Cemetery

This map was produced by the Strafford Regional Planning Commission. Original tax maps were recompiled onto 1:4800 and 1:2400 NH GRANIT GIS Digital Orthophoto Quarter Quadrangles (DOQQ) on mylar and digitized to form a digital composite map in October, 2001. Parcel shapes were distorted as part of the compilation process; therefore, map-measured distances and areas may be different than reported distances and areas.

Original source maps:
John E. O'Donnell & Associates; Auburn, Maine; Revised April 1, 1996.
Updated and Reprinted by Doucet Survey, Inc.; Newmarket, NH; August 10, 1998.

UPDATES:
June 2007 with data through 2006 (DA)
June 2009 with data through 2008 (DC)
April 2015 with data through March 2015 (CS)
August 2016 with data through March 2016 (RM)
July 2017 with data through April 2017 (RM)
July 2019 with data through April 2019 (GIS Planner)

**THIS MAP IS FOR ASSESSMENT PURPOSES ONLY.
IT IS NOT INTENDED FOR LEGAL DESCRIPTION OR CONVEYANCE.**

