

STRAFFORD

Regional Planning Commission

Date: October 12, 2023

To: Newmarket Conservation Commission
Bart McDonough, Director of Planning and Community Development

From: Autumn Scott, Regional Planner
Jackson Rand, GIS Planner
Jennifer Czysz, Executive Director

RE: Newmarket Open Space Plan Kickoff

Due to unforeseen circumstances, we are not able to join the Conservation Commission as planned this evening. However, to not lose time and progress, we wanted to send along the materials we planned to share and discuss with you. The following outlines the enclosed materials and related next steps for each.

Project Scope and Timeline

The overall project will update the Town's Open Space Conservation Plan Chapter:

<https://www.newmarketnh.gov/planning-board/pages/newmarket-master-plan>

Staff will attend an upcoming meeting to review the project scope and timeline in more detail.

Updated Maps

A first step in the project is to update the existing maps found throughout the chapter.

Following please find seven draft updated maps.

The Ask:

This evening or before the next meeting, review the maps for accuracy and general comments.

Send comments to ascott@strafford.org and jrand@strafford.org.

Implementation of the 2007 Chapter

Also included in this packet please find Chapter 8 Recommendations of the Plan. To help outline direction for the updated chapter, we need to assess where we are today.

The Ask:

Compile notes on progress toward implementing each of the recommendations.

For those that are complete or in progress, note as such.

For those that are not complete, note whether they are still relevant and should be retained.

Send comments to ascott@strafford.org

STRAFFORD REGIONAL PLANNING COMMISSION

150 Wakefield Street, Suite 12, Rochester, NH 03867

Barrington | Brookfield | Dover | Durham | Farmington | Lee | Madbury | Middleton | Milton | New Durham
Newmarket | Northwood | Nottingham | Rochester | Rollinsford | Somersworth | Strafford | Wakefield



Map 1 - Basemap

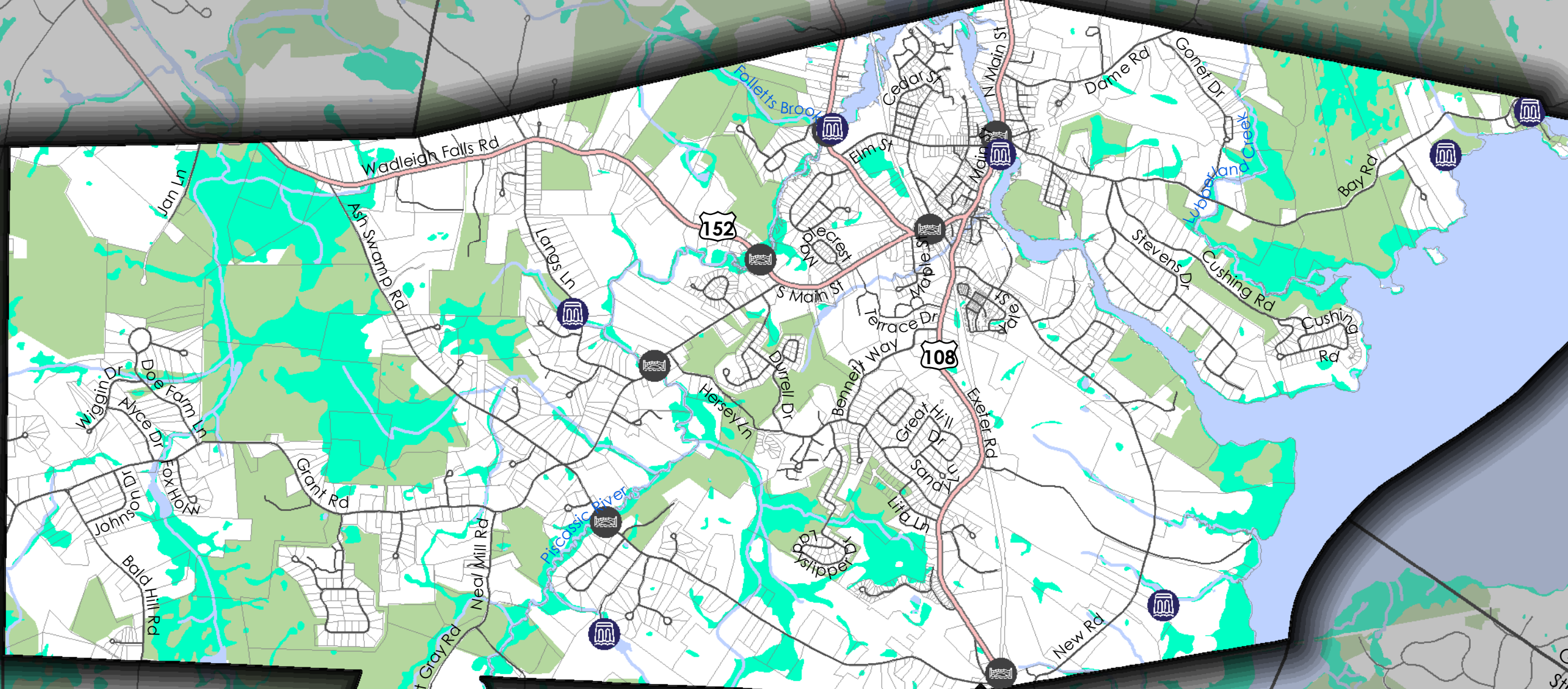
Town of Newmarket, NH

Open Space Plan

SRPC Information

Prepared by Strafford Regional Planning Commission
150 Wakefield Street #12
Rochester, NH 03867
603-994-3500

Author: Jackson Rand
Date: 8/18/2023



Legend

- Major Roads
- Local Roads
- Parcels
- Rivers and Streams
- Lakes and Ponds
- Wetlands
- Conservation Lands
- Bridges
- Active Dams

Data Disclaimer

Base data layers from ESRI, NH GRANIT, NHDOT, NHDES, USGS, and the Town of Newmarket. These agencies and organizations have derived this data using a variety of cited source materials, at different time frames, through different methodologies, with varying levels of accuracy. As such, errors are often inherent in GIS data and should be used for planning purposes only. The presented data is sometimes only a subset of the original data. Please visit the original location of the data, contact the original host source, or contact SRPC for information on the full data set.



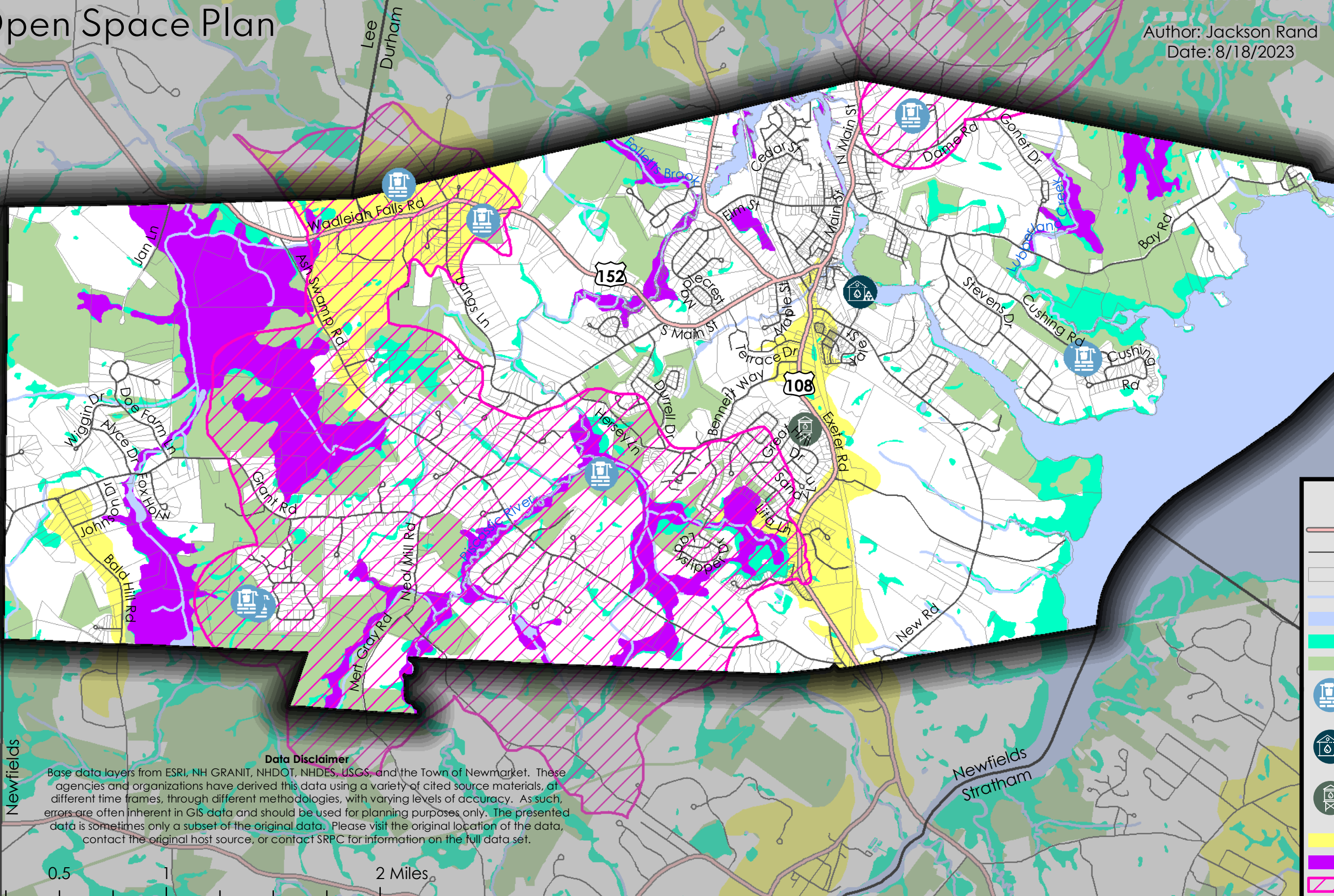
Map 2 - Groundwater & Drinking Water

Town of Newmarket, NH
Open Space Plan

SRPC Information

Prepared by Strafford Regional Planning Commission
150 Wakefield Street #12
Rochester, NH 03867
603-994-3500

Author: Jackson Rand
Date: 8/18/2023



Legend

- Major Roads
- Local Roads
- Parcels
- Rivers and Streams
- Lakes and Ponds
- Wetlands
- Conservation Lands
- Public Water Supply Wells
- Wastewater Treatment Plant
- Water Towers
- Stratified Drift Aquifers
- Prime Wetlands
- Wellhead Protection Areas

Data Disclaimer

Base data layers from ESRI, NH GRANIT, NHDOT, NHDES, USGS, and the Town of Newmarket. These agencies and organizations have derived this data using a variety of cited source materials, at different time frames, through different methodologies, with varying levels of accuracy. As such, errors are often inherent in GIS data and should be used for planning purposes only. The presented data is sometimes only a subset of the original data. Please visit the original location of the data, contact the original host source, or contact SRPC for information on the full data set.



Map 3 - Areas of Ecological Significance

Town of Newmarket, NH
Open Space Plan

SRPC Information

Prepared by Strafford Regional Planning Commission
150 Wakefield Street #12
Rochester, NH 03867
603-994-3500

Author: Jackson Rand
Date: 8/18/2023



Legend

- Major Roads
- Local Roads
- Parcels
- Rivers and Streams
- Lakes and Ponds
- Wetlands
- Conservation Lands
- Wildlife Action Plan (NH Fish & Game)**
- Highest Ranked Habitat in NH
- Highest Ranked Habitat in the Biological Region

Data Disclaimer

Base data layers from ESRI, NH GRANIT, NHDOT, NHDES, USGS, and the Town of Newmarket. These agencies and organizations have derived this data using a variety of cited source materials, at different time frames, through different methodologies, with varying levels of accuracy. As such, errors are often inherent in GIS data and should be used for planning purposes only. The presented data is sometimes only a subset of the original data. Please visit the original location of the data, contact the original host source, or contact SRPC for information on the full data set.



Map 4 - Conservation Lands

Town of Newmarket, NH
Open Space Plan

SRPC Information

Prepared by Strafford Regional Planning Commission
150 Wakefield Street #12
Rochester, NH 03867
603-994-3500

Author: Jackson Rand
Date: 8/18/2023



Legend

- Major Roads
 - Local Roads
 - Parcels
 - Rivers and Streams
 - Lakes and Ponds
 - Wetlands
 - Conservation Lands
- Conservation Types**
- Publicly Owned Conservation Land
 - Publicly Owned Conservation Easement
 - Publicly Owned Other Conservation Land
 - Privately Owned Conservation Land
 - Privately Owned Conservation Easement

Data Disclaimer

Base data layers from ESRI, NH GRANIT, NHDOT, NHDES, USGS, and the Town of Newmarket. These agencies and organizations have derived this data using a variety of cited source materials, at different time frames, through different methodologies, with varying levels of accuracy. As such, errors are often inherent in GIS data and should be used for planning purposes only. The presented data is sometimes only a subset of the original data. Please visit the original location of the data, contact the original host source, or contact SRPC for information on the full data set.



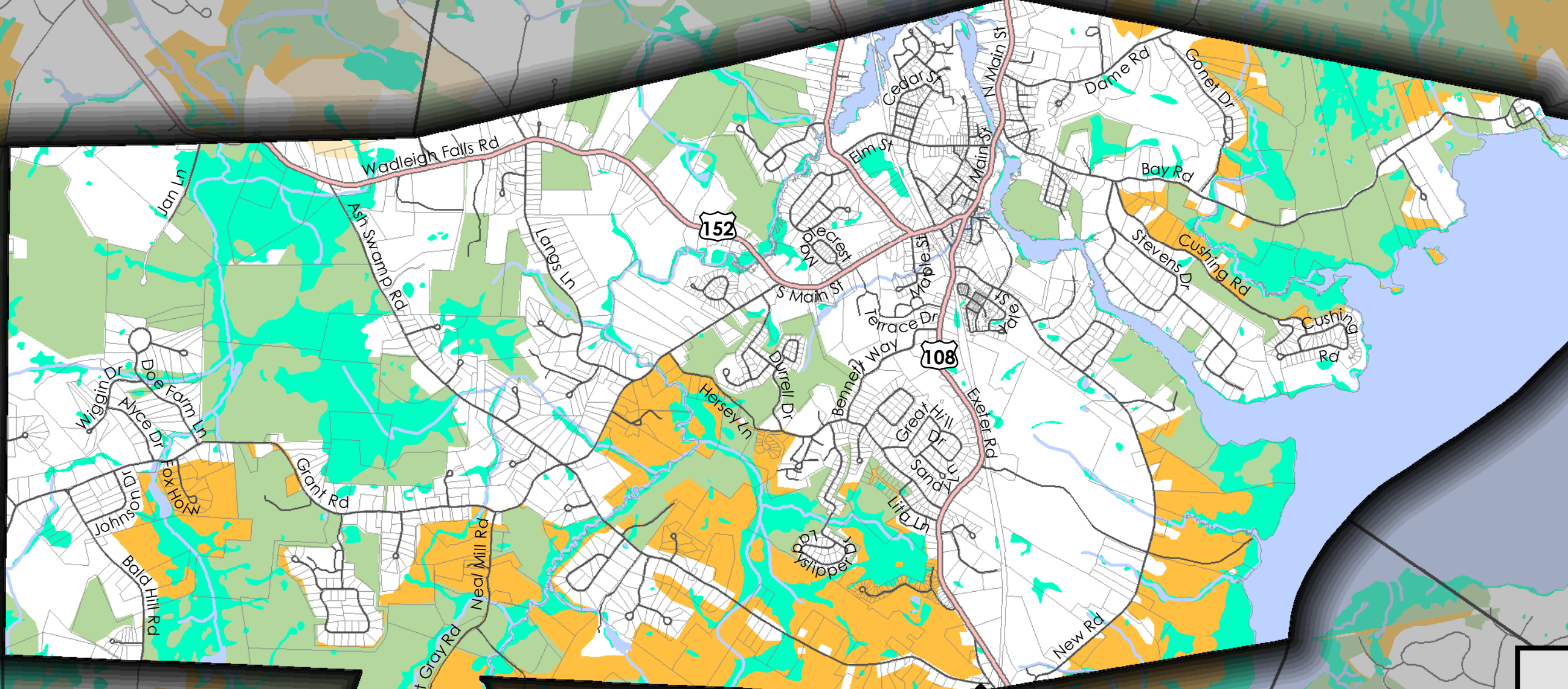
Map 5 - Conservation Focus Areas

Town of Newmarket, NH
Open Space Plan

SRPC Information

Prepared by Strafford Regional Planning Commission
150 Wakefield Street #12
Rochester, NH 03867
603-994-3500

Author: Jackson Rand
Date: 8/18/2023



Legend

- Major Roads
- Local Roads
- Parcels
- Rivers and Streams
- Lakes and Ponds
- Wetlands
- Conservation Lands
- Coastal Conservation Plan**
- Core Area
- Supporting Natural Landscapes

Data Disclaimer

Base data layers from ESRI, NH GRANIT, NHDOT, NHDES, USGS, and the Town of Newmarket. These agencies and organizations have derived this data using a variety of cited source materials, at different time frames, through different methodologies, with varying levels of accuracy. As such, errors are often inherent in GIS data and should be used for planning purposes only. The presented data is sometimes only a subset of the original data. Please visit the original location of the data, contact the original host source, or contact SRPC for information on the full data set.



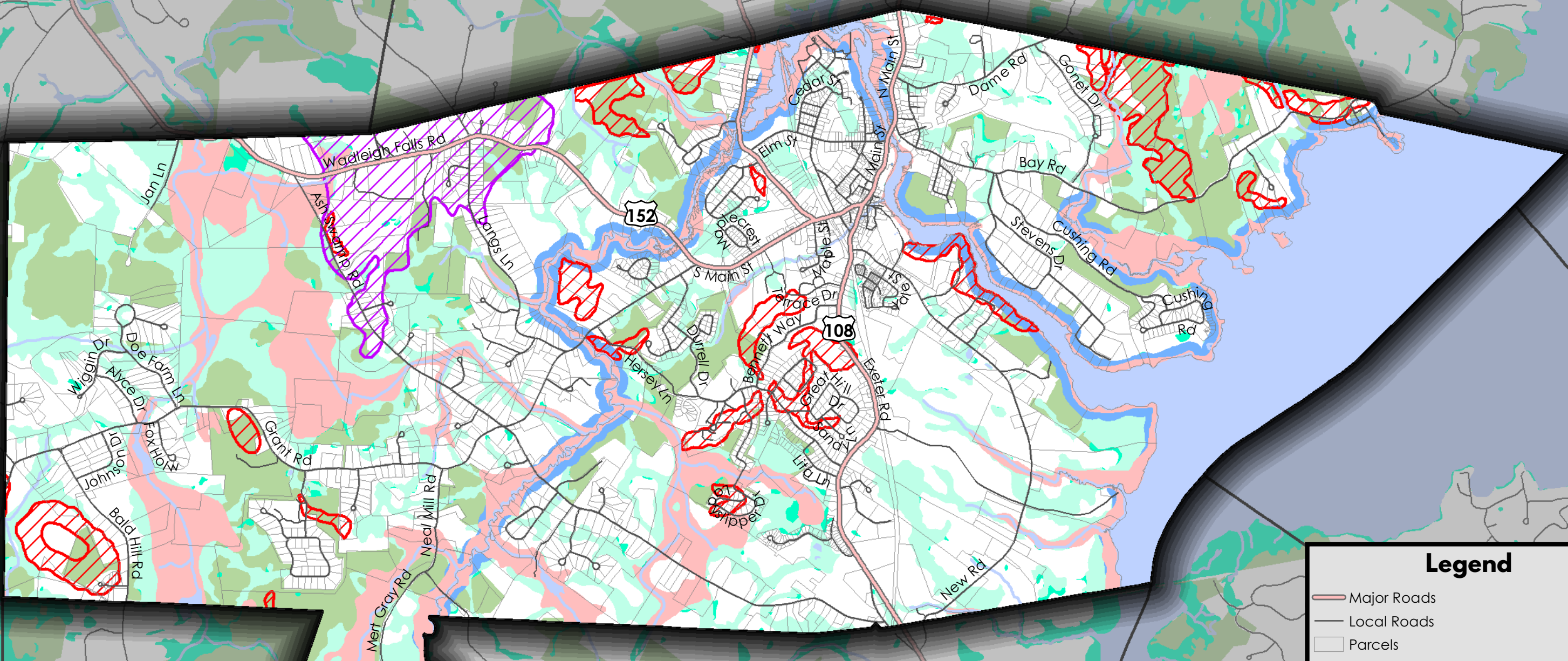
Map 6 - Zoning Overlay Districts

Town of Newmarket, NH
Open Space Plan

SRPC Information

Prepared by Strafford Regional Planning Commission
150 Wakefield Street #12
Rochester, NH 03867
603-994-3500

Author: Jackson Rand
Date: 8/18/2023



Legend

- Major Roads
- Local Roads
- Parcels
- Rivers and Streams
- Lakes and Ponds
- Wetlands
- Conservation Lands
- Aquifer Protection Overlay District
- Steep Slope Protection Overlay District
- Floodplain Protection Overlay District
- Shoreland Protection Overlay District
- Wetland Protection Overlay District

Data Disclaimer
Base data layers from ESRI, NH GRANIT, NHDOT, NHDES, USGS, and the Town of Newmarket. These agencies and organizations have derived this data using a variety of cited source materials, at different time frames, through different methodologies, with varying levels of accuracy. As such, errors are often inherent in GIS data and should be used for planning purposes only. The presented data is sometimes only a subset of the original data. Please visit the original location of the data, contact the original host source, or contact SRPC for information on the full data set.



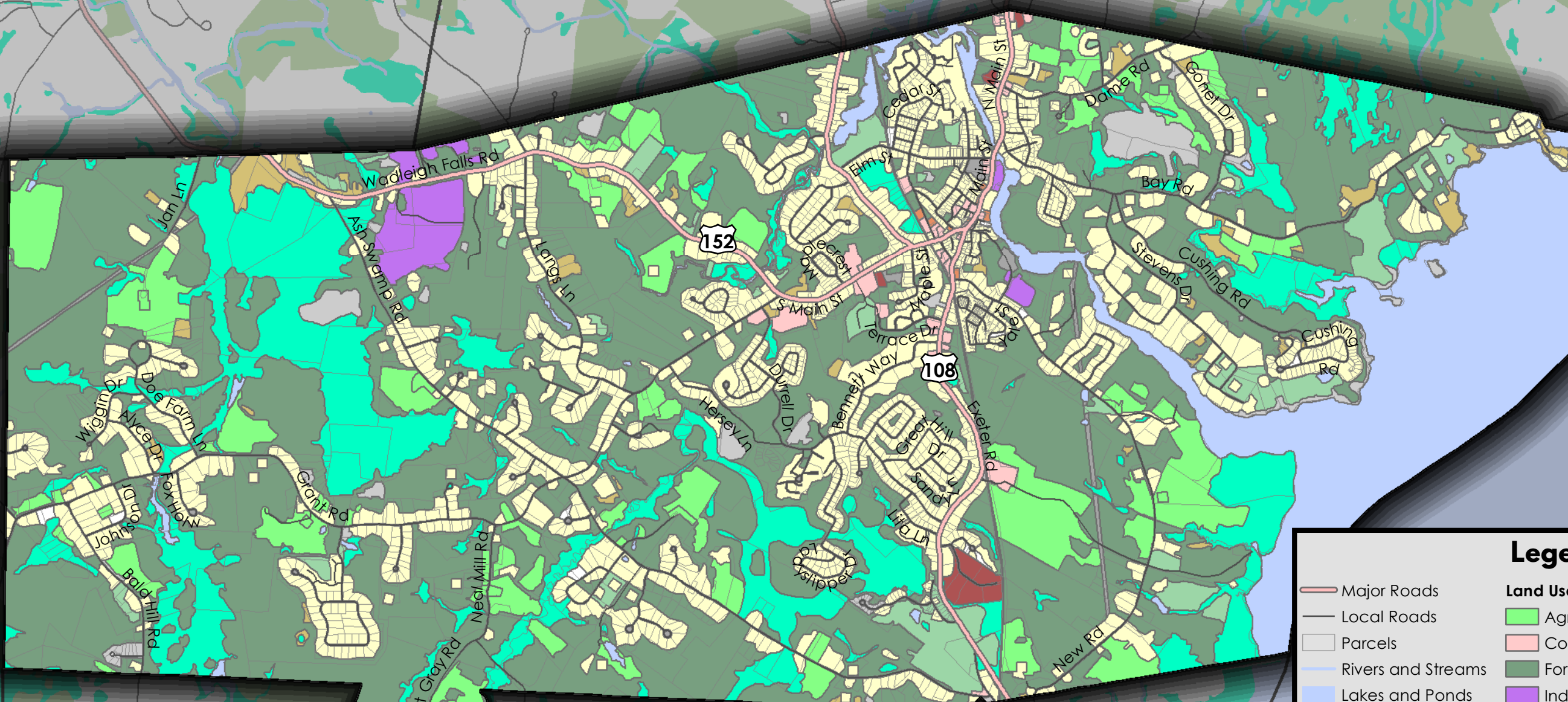
Map 7 - Land Use

Town of Newmarket, NH

Open Space Plan

SRPC Information
 Prepared by Strafford Regional Planning Commission
 150 Wakefield Street #12
 Rochester, NH 03867
 603-994-3500

Author: Jackson Rand
 Date: 8/18/2023



Legend

Major Roads	Agriculture
Local Roads	Commercial, Services, Institutional
Parcels	Forest Land
Rivers and Streams	Industrial
Lakes and Ponds	Industrial/Commercial Complexes
Wetlands	Mixed Developed Uses
Conservation Lands	Other Natural or Barren Land
	Outdoor and Urban Built-Up Land
	Residential
	Transitional Natural Lands
	Transpo, Utilities
	Vacant Land
	Water
	Wetlands

Data Disclaimer
 Base data layers from ESRI, NH GRANIT, NHDOT, NHDES, USGS, and the Town of Newmarket. These agencies and organizations have derived this data using a variety of cited source materials, at different time frames, through different methodologies, with varying levels of accuracy. As such, errors are often inherent in GIS data and should be used for planning purposes only. The presented data is sometimes only a subset of the original data. Please visit the original location of the data, contact the original host source, or contact SRPC for information on the full data set.

0 0.5 1 2 Miles

Table 11. Summary of Recommendations, Newmarket Open Space Plan (Snyder 2007)							
See Chapter 8 for more details on recommendations.							
RECOMMENDATIONS	Conservation Commission	Open Space Commission	Planning Board & Dept	Town Council	Public Works Dept	Recreation Dept	Town Webmaster
EDUCATION AND STEWARDSHIP							
Erect and/or maintain information kiosks at the following conservation areas: Wiggin Farm-Tuttle Swamp, Piscassic River-Loiselle, Heron Point Sanctuary, Sliding Rock, and Schanda Park	X						
Provide information on town conservation lands and conservation issues to the public through the Town of Newmarket website and the public access Channel 13	X						X
Conduct annual monitoring visits to Town-owned conservation lands and Town-held conservation easements	X						
Review the Town Ordinances that pertain to use of conservation lands to ensure that the ordinances are consistent with the purposes for which the land was conserved	X						
Develop a walking trail on the Piscassic River-Loiselle Conservation Area that connects to Follet's Brook conservation lands	X					X	
Continue to evaluate and implement opportunities to develop a walking trail network throughout Town and connecting to open spaces in neighboring towns	X					X	
Maintain the open fields and implement other management activities at the Wiggin Farm-Tuttle Swamp and Piscassic River-Loiselle Conservation Areas; follow management plan	X				X		
Re-Affirm Commitment to the Land Trust Alliances (LTA) Standards and Practices				X			
Host educational workshops on conservation topics and lead field trips to conservation areas to promote public awareness and involvement	X						

RECOMMENDATIONS	Conservation Commission	Open Space Commission	Planning Board & Dept	Town Council	Public Works Dept	Recreation Dept	Town Webmaster
LAND USE PLANNING, CONT							
Develop a Town record-keeping system to accurately and efficiently track existing lands in and additions to the network of conservation lands and subdivision open spaces in Newmarket			X				
Update existing and implement new land use planning tools to provide additional protection to the Aquifer Overlay District and Wellhead Protection Area			X	X			
Require open space design development for residential subdivisions			X				
Implement all feasible Stormwater Management practices to prevent and minimize runoff that contains contaminants and causes erosion			X		X		
Implement the wetland mitigation projects in Newmarket as identified in a 2003 Report to the NH Estuaries Project, as opportunities and funding allow	X		X				
Evaluate the tidal wetlands (saltmarsh) to assess for potential designation as prime wetlands, similar to the freshwater prime wetlands designation	X						
Maintain involvement in committees related to the Lamprey River including the Lamprey River Advisory Committee and the Lamprey River In-Stream Flow Study Committee				X			